

Modulift®

working between the hook and the load

Spreader Beam Series



THE LIFTING EXPERTS



LGH in action on a machinery
installation and maintenance project
for NASA at Kennedy Space Centre, FL

Modulift® are the leading supplier of spreader beams, lifting beams, spreader frames and other below-the-hook heavy lifting equipment.

- **Cost-effective**
- **Portable**
- **Lightweight**
- **Various Configurations**





What size spreader beam do I need?

First, select the span you require, then select the WLL you need for that span. Please see tables below to select your beam.

Applied Technical Standards

- AS 4991 : Lifting Devices
- BS EN 13155: Cranes - Safety - Non-fixed Load Lifting Attachments
- BS EN 1993-1-1: Eurocode 3: Design of Steel Structures - Part 1-1: General Rules and Rules for Buildings
- BS2573: Rules for the Design of Cranes: Part 1: Spec. for classification, stress calcs & design criteria for structures
- ASME B30.20 for Below-the-Hook Lifting Devices
- ASME BTH-1: Design of Below-the-Hook Lifting Devices
- DNV Design Approval: Modulift® Spreader Beam Standard Range

Proof Load Factors

We adhere to the recommendations in the DNV Standard and DNV - GL ST-0378 - as per the formula below. The only times where we deviate from this is if a customer specifically asks for something different.

WLL \geq 10T: 2x WLL

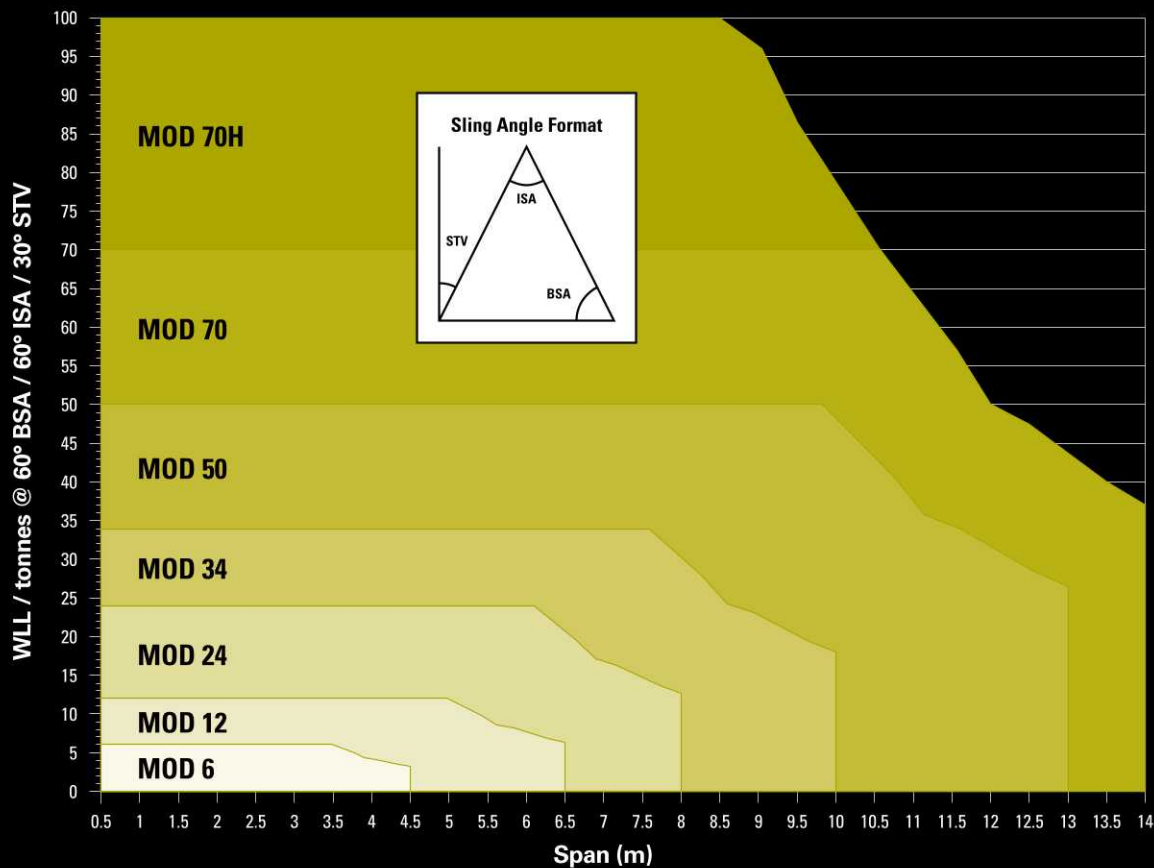
10T < WLL \leq 160T: (WLL x 1.04) + 9.6T

WLL > 160T: 1.1 x WLL

Grade 8.8 Bolts

Standard fasteners for connecting the components in Modulift® spreader beams are grade 8.8 bolts, grade 8 nuts and form B washers. The function of the fasteners is to securely fasten the components together to form a single beam. In use, due to the 'pin-ended strut' design, the spreader beam itself is under a purely compressive load when the load is applied, and therefore the fasteners are themselves not subjected to tensile or other loads.

Modulift® Spreader Beam Range Load v Span Chart up to 70t WLL



**Components
per set**

*Please note:
Custom length struts are
available upon request

What size shackle do I need?

MOD 6

Top: 4.75t
Lower: 3.25t



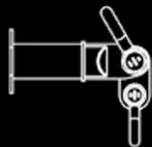
MOD 12

Top: 8.5t
Lower: 6.5t



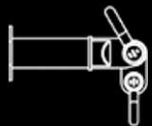
MOD 24

Top: 17t
Lower: 12t



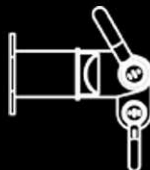
MOD 34

Top: 25t
Lower: 17t



MOD 50

Top: 35t
Lower: 25t



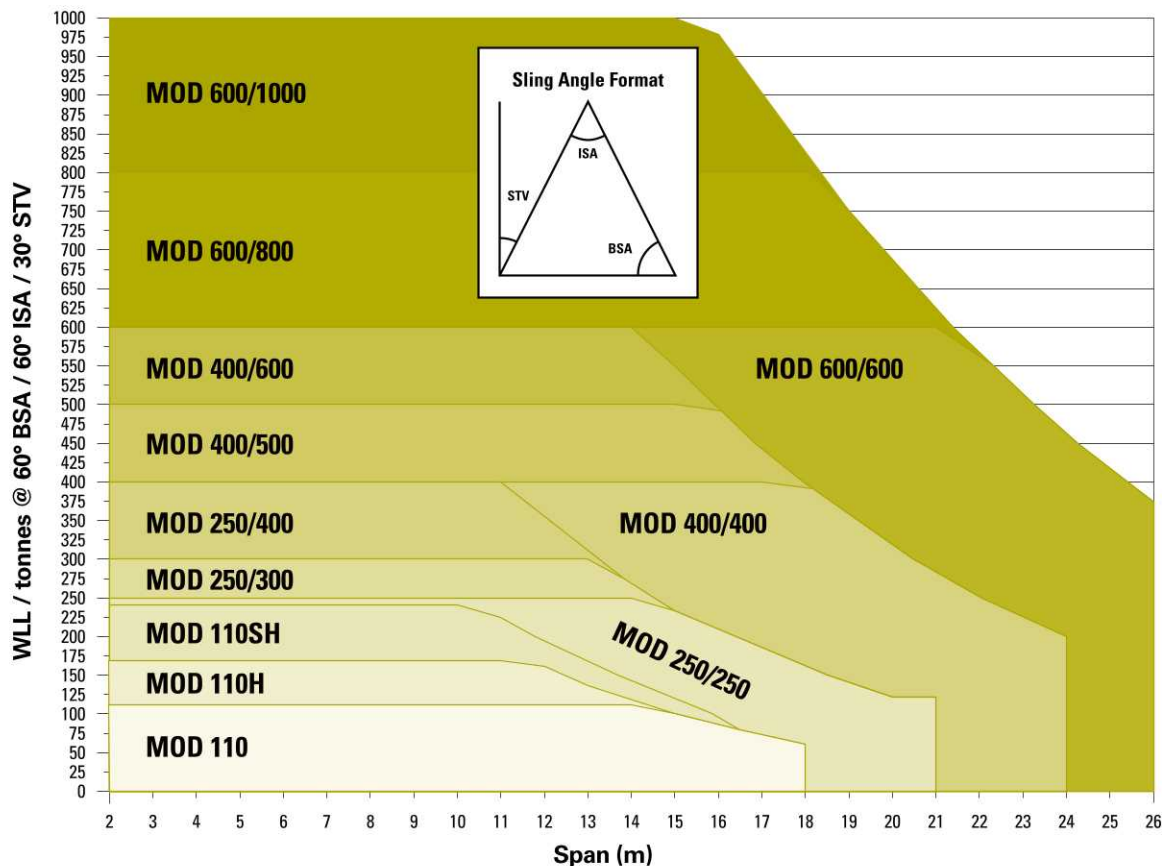
MOD 70/H

Top: 55t/85t
Lower: 35t/55t



| Spreader System | Strut | | | | | | | | | | | | | End Unit | Drop Link |
|--|-------|------|-------|------|------|------|-------|------|------|------|------|------|------|----------|-----------|
| | 0.1m | 0.2m | 0.25m | 0.3m | 0.5m | 0.6m | 0.75m | 1.0m | 1.5m | 2.0m | 3.0m | 4.0m | 6.0m | | |
| Mod 6 | 1 | 1 | | 1 | | 1 | | 4 | | | | | | 2 | 2 |
| Mod 12 | | | 1 | | 1 | | 1 | 1 | 3 | | | | | 2 | 2 |
| Mod 24 | | | | | 1 | | | 1 | | 3 | | | | 2 | 2 |
| Mod 34 | | | | | 1 | | | 1 | | 4 | | | | 2 | 2 |
| Mod 50 | | | | | 1 | | | 2 | | 1 | | 2 | | 2 | 2 |
| Mod 70 & 70H | | | | | 1 | | | 1 | | 2 | | 2 | | 2 | 2 |
| Mod 110 & 110H | | | | | 1 | | | 1 | | 2 | | 3 | | 2 | 2 |
| Mod 110SH | | | | | 1 | | | 1 | | 1 | | 3 | | 2 | 2 |
| Mod 250/250 Mod 250/300 Mod 250/400 | | | | | 1 | | | 1 | | 2 | 1 | | 2 | 2 | 2 |
| Mod 400/400 Mod 400/500 Mod 400/600 | | | | | 1 | | | 1 | | 1 | 1 | | 3 | 2 | 2 |
| Mod 600/600 Mod 600/800 Mod 600/1000 | | | | | 1 | | | 1 | | 1 | 1 | | 3 | 2 | 2 |

Modulift® Spreader Beam Range Load v Span Chart up to 1000t WLL



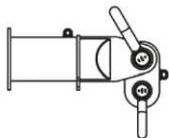
**Weight
per set (kgs)**

*Weight based on heaviest spreader in series using configuration recommended in user instructions

What size shackle do I need?

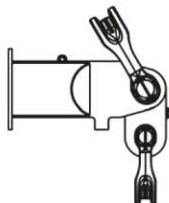
MOD 110/H/SH

Top: 85t/120t/150t
Lower: 55t/85t/120t



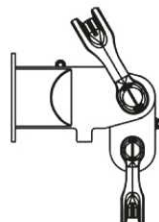
MOD 250

Top: 200t-300t
Lower: 125t-200t



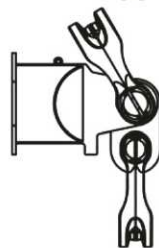
MOD 400

Top: 300t-400t
Lower: 200t-400t



MOD 600+

Top: 300t-600t
Lower: 200t-500t



| Weights | MOD 6 | MOD 12 | MOD 24 | MOD 34 | MOD 50 | MOD 70, 70H | MOD 110, 110H | MOD 110SH | MOD 250 | MOD 400 | MOD 600 |
|-----------------------|-------|--------|--------|--------|--------|-------------|---------------|-----------|---------|---------|---------|
| Max. Component Weight | 8.1 | 19 | 41 | 51 | 140 | 240 | 367 | 444 | 860 | 1365 | 2665 |
| Min. Component Weight | 0.6 | 1.3 | 5 | 7 | 11 | 17/32 | 44/55 | 63 | 90 | 135 | 135 |
| Weight at Max. Span | 32 | 75 | 178 | 290 | 532 | 972/1090 | 1970/2130 | 2628 | 4895 | 8260 | 17260 |

Maintenance and Inspection Procedure

Each time a Modulift® spreader beam is used, regular checks need to be carried out and are specified on our user instruction sheets. In addition to these we also strongly recommend that all spreader beam components are thoroughly examined at intervals not exceeding six months by a component person with relevant experience, knowledge and training. A written record of such examinations should be kept. If a component, or components are subject to exceptional circumstances, (i.e. overloading) then a thorough examination should be carried out regardless of the period from last examination to ensure that the component(s) are still safe for use.





Modulift® Spreader Beam Guide

| Modulift® Spreader Series | Bottom Shackle Size | | | Top Shackle Size | | |
|------------------------------|---------------------|------------------|----------------|------------------|------------------|----------------|
| | WLL | Max Pin Diameter | Rec. Jaw Width | WLL | Max Pin Diameter | Rec. Jaw Width |
| Mod 6 | 3.25t | 19mm | 27mm | 4.75t | 22mm | 31mm |
| Mod 12 | 6.5t | 25mm | 36mm | 8.5t | 28mm | 43mm |
| Mod 24 | 12t | 35mm | 51mm | 17t | 42mm | 60mm |
| Mod 34 | 17t | 42mm | 60mm | 25t | 50mm | 74mm |
| Mod 50 | 25t | 50mm | 74mm | 35t | 57mm | 83mm |
| Mod 70 | 35t | 57mm | 83mm | 55t | 70mm | 105mm |
| Mod 70H | 55t | 70mm | 105mm | 85t | 83mm | 127mm |
| Mod 110 | 55t | 70mm | 105mm | 85t | 83mm | 127mm |
| Mod 110H | 85t | 83mm | 127mm | 120t | 95mm | 147mm |
| Mod 110SH | 120t | 95mm | 147mm | 150t | 108mm | 169mm |
| Mod 250/250 | 125t | 80mm | 137mm | 200t | 105mm | 158mm |
| Mod 250/300 | 150t | 95mm | 147mm | 200t | 105mm | 158mm |
| Mod 250/400 | 200t | 105mm | 158mm | 300t | 134mm | 195mm |
| Mod 400/400 | 200t | 105mm | 158mm | 300t | 134mm | 195mm |
| Mod 400/500 | 250t | 120mm | 179mm | 300t | 134mm | 195mm |
| Mod 400/600 | 300t | 134mm | 195mm | 400t | 160mm | 231mm |
| Mod 600/400 | 200t | 105mm | 158mm | 300t | 134mm | 195mm |
| Mod 600/600 | 300t | 134mm | 195mm | 400t | 160mm | 231mm |
| Mod 600/800 | 400t | 160mm | 231mm | 500t | 180mm | 263mm |
| Mod 600/1000 | 500t | 180mm | 263mm | 600t | 200mm | 289mm |

Contact us for help and information on hiring



03704 247 247



enquiries@lgh.co.uk



www.lgh.co.uk

Our locations

Aberdeen Warehouse

Unit 6-8, Kirkton Avenue,
Pitmedden Road,
Industrial Estate, Dyce,
Aberdeen, AB21 0BF

Glasgow Warehouse

Coronation Road Industrial
Estate, Motherwell,
ML1 4HP

Customer Contact Centre / National Rental Centre

120 Bolton Road,
Atherton, Manchester,
M46 9JZ

Alfreton Warehouse

Trading Estate,
Wimsey Way,
Alfreton, DE55 4LS

London Warehouse

Unit 6, Crayside
Industrial Estate,
Thames Road,
Crayford, Kent, DA1 4RF

Proud to be
accredited
by the best



03704 247 247

enquiries@lgh.co.uk

www.lgh.co.uk



LGH Global | In Operation Worldwide | www.lgh.co.uk