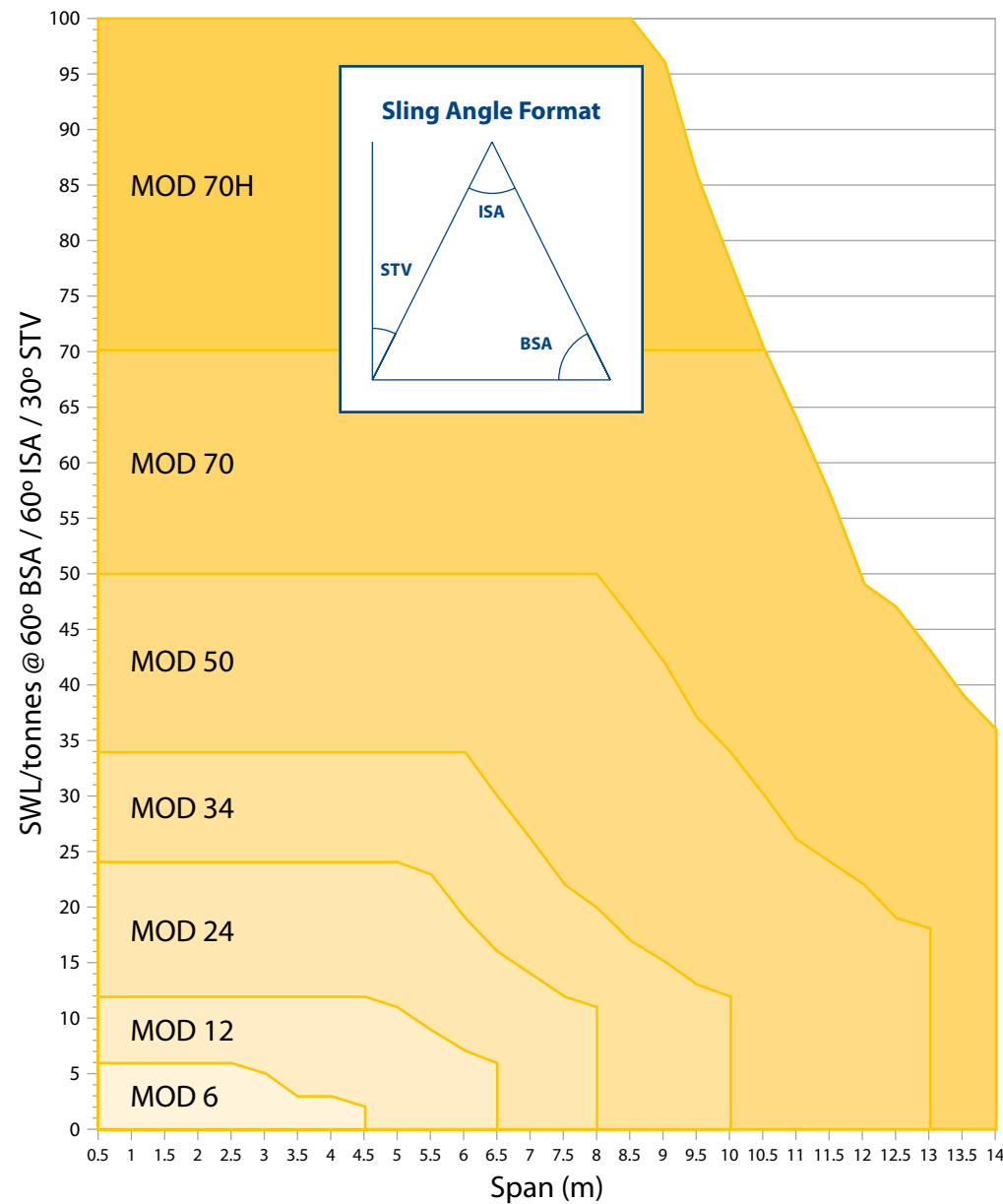
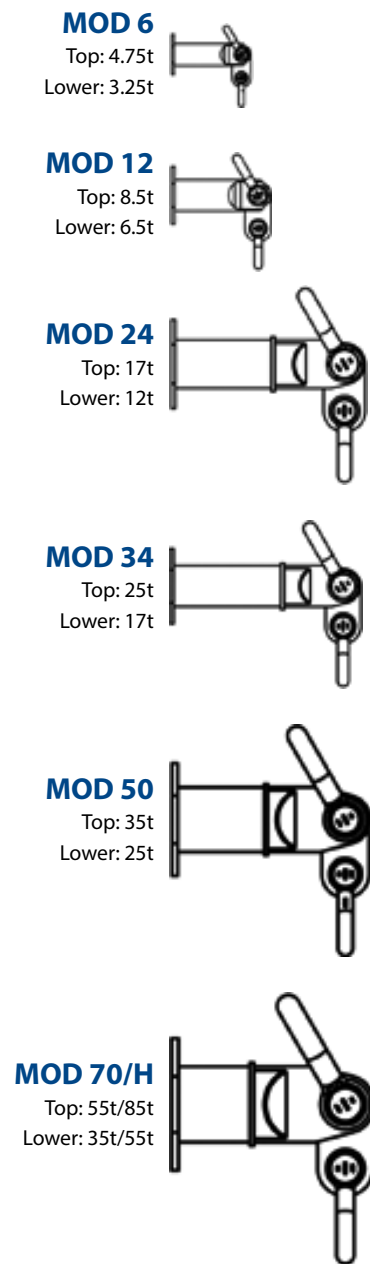


The Standard Range

Load v Span Chart - Modulift Spreader Beam Standard Range



What size shackle do I need?



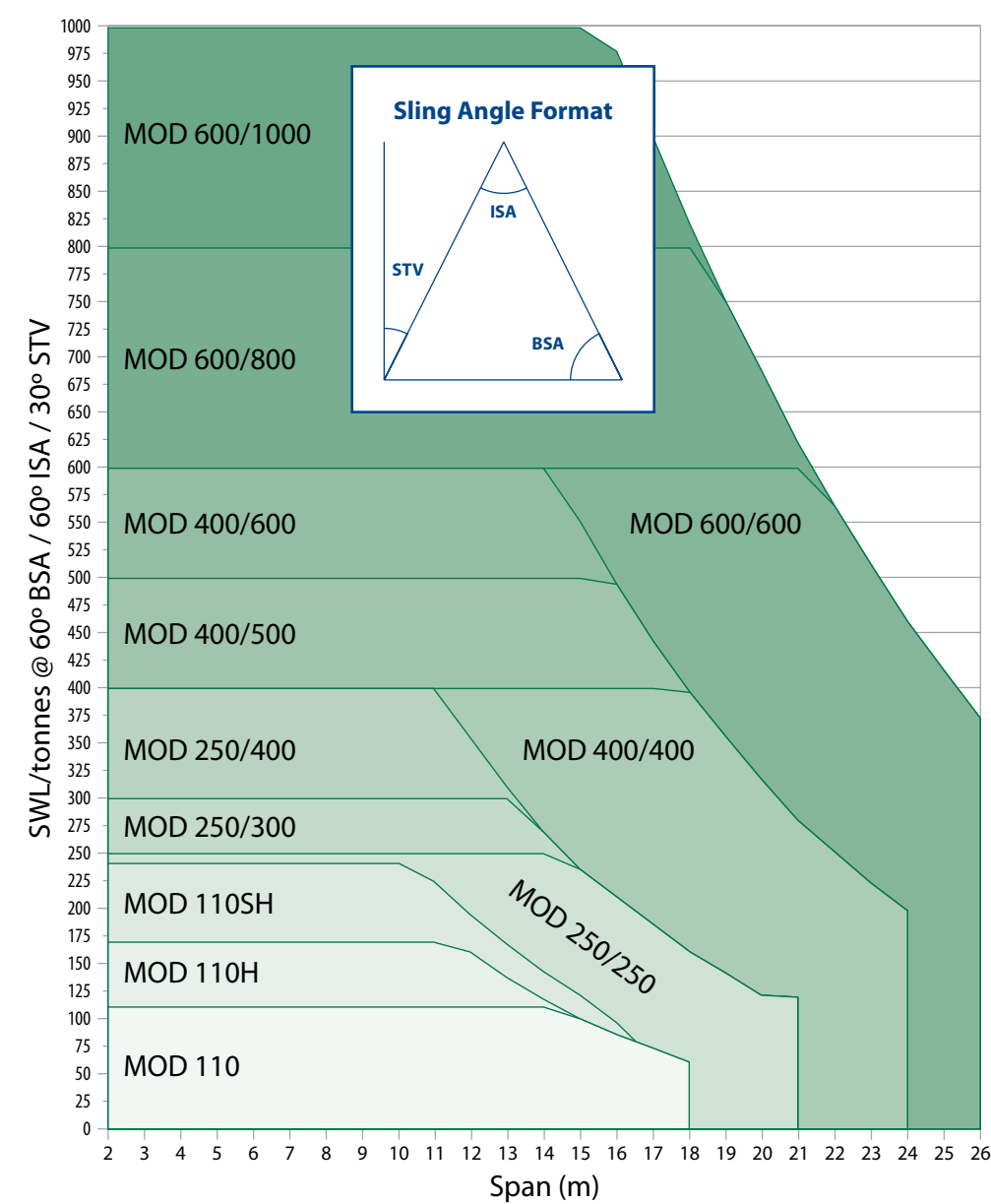
Components per Set

* Please note: Custom length Struts are available on request

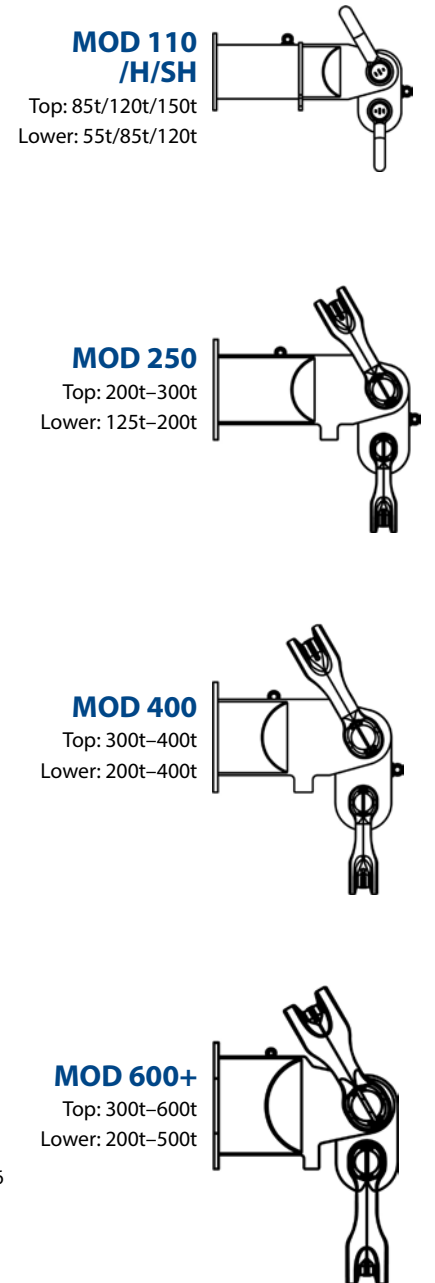
Spreader System	Strut													End unit	Drop link
	0.1m	0.2m	0.25m	0.3m	0.5m	0.6m	0.75m	1.0m	1.5m	2.0m	3.0m	4.0m	6.0m		
MOD 6	1	1	1	1	1	1	4							2	2
MOD 12			1	1	1	1	1	3						2	2
MOD 24					1	1	1	3						2	2
MOD 34					1	1	1	4						2	2
MOD 50					1	2	1	2						2	2
MOD 70/70H					1	1	2	2						2	2
MOD 110/110H					1	1	2	3						2	2
MOD 110SH					1	1	1	3						2	2
MOD 250-250 / 250-300 / 250-400						1	2	1						2	2
MOD 400-400 / 400-500 / 400-600					1	1	1	1						3	2
MOD 600-600 / 600-800 / 600-1000					1	1	1	1						3	2

The Heavy Range

Load v Span Chart - Modulift Spreader Beam Heavy Range



What size shackle do I need?



Weight per Set (kgs)

* Weight based on heaviest spreader in series using configuration recommended in user instructions

Weight	MOD 6	MOD 12	MOD 24	MOD 34	MOD 50	MOD 70, 70H	MOD 110, 110H	MOD 110SH	MOD 250	MOD 400	MOD 600
Max. Component Weight	8.1	19	41	51	140	240	367	444	860	1365	2665
Min. Component Weight	0.6	1.3	5	7	11	17 / 32	44 / 55	63	90	135	135
Weight at Max. Span	32	75	178	290	532	972/1090	1970/2130	2628	4895	8260	17260