

L20 LEVELLING DEVICE

PRODUCT INFORMATION



Hoisting



Jacking



Pulling



Rigging



Material
Handling



Safety

supporting our
customers for over





**PRECISE, QUICK &
SAFE LEVELLING
OF UNEVEN
LOADS**

OUR COMMITMENT TO YOU

- 🔧 We have you covered with the latest innovative equipment, unrivalled knowledge and scalability
- 🔧 Hire fleet from the World's most trusted manufacturers
- 🔧 Industry leading expertise and knowledge
- 🔧 Dedicated account manager and hire desk specialist
- 🔧 All equipment tested and certified to the highest standards with certifications available
- 🔧 Fully compliant with all current health and safety regulations
- 🔧 No waiting around; we deliver quickly across the UK
- 🔧 Solutions tailored to your project



INNOVATION FOR YOUR INDUSTRY

- 🔧 The years of experience we have gained means we understand the issues you face, and we are here to solve them with you.
- 🔧 We understand time is money. Our innovative equipment paired with technical support makes sure your project runs without delays in the unlikely event of a breakdown.
- 🔧 **What sectors can benefit from the L20 Levelling Device?**
 - Pre-cast and pre-fabricated manufacturing
 - Modular building
 - Crane and heavy lifting
 - ...and many more

L20 LEVELLING DEVICE (YOKE)



The L20 is a radio-controlled levelling device (yoke) that, using both new and well tested technology, levels loads effectively and safely with high precision. The yoke can handle both light and heavy objects up to 20 tonnes.



How does it work?

Powered by a built-in electric motor with a rechargeable battery.

Customers usually charge the battery overnight, but with normal use the battery can last up to 5 days.

BENEFITS FOR YOU

- ✓ **Increases productivity**
levels the objects quickly and safely with the press of a button, reducing both expensive crane & waiting times.
- ✓ **Saves installation time by up to 30%***
for pre-fabricated building elements
- ✓ **Eliminates potential damage and increases safety**
radio-controlled alignment of the chain removes manual adjusting



View QR code to watch YouTube video of L20 in operation.

*Estimate

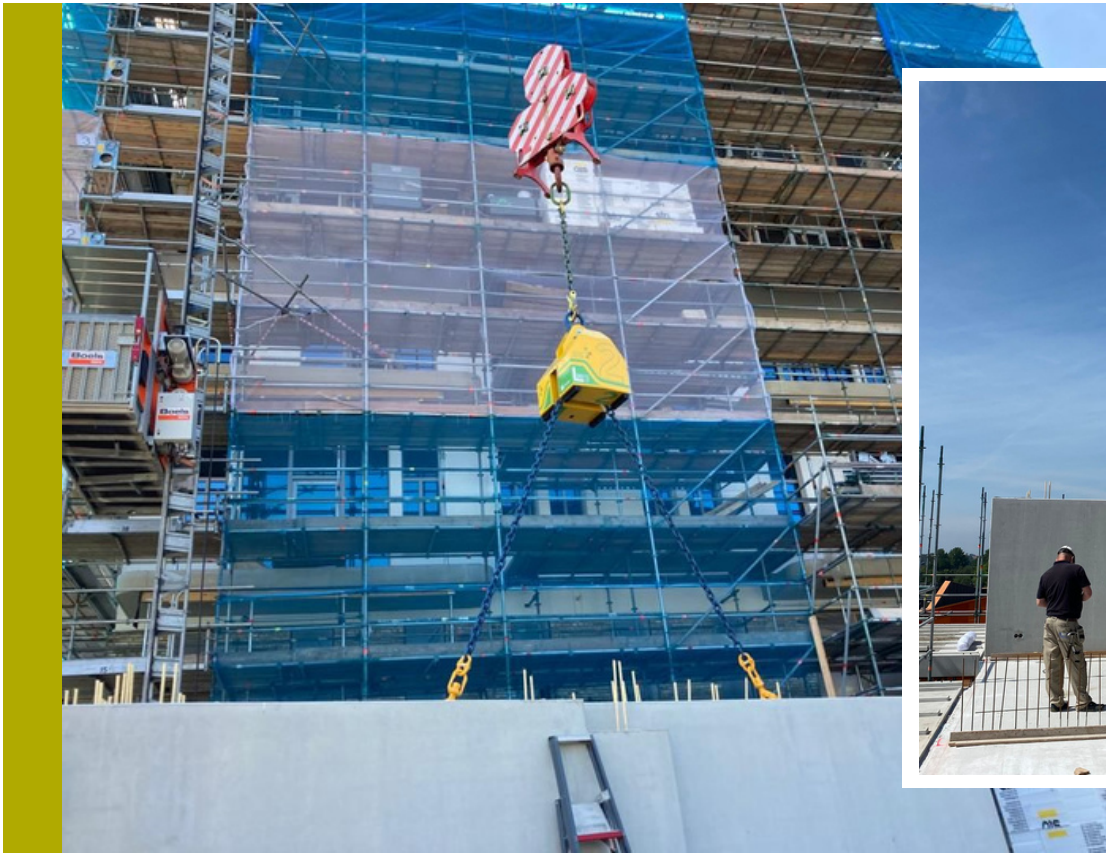
CASE STUDIES

DISMANTLING A CRANE ARM

📍 NETHERLANDS

Diving company W. Smit used the leveller whilst dismantling a crane arm on top of an 18-metre high pedestal.

The L20 was able to correct the centre of gravity and balance the load, allowing our customer to hang the crane straight and loosen the foundation bolts. Once these were loosened, the crane boom was lifted off.




TALK TO AN EXPERT ON **03704 247 247** OR **ENQUIRIES@LGH.CO.UK**

CONTACTS & LOCATIONS

NATIONAL RENTAL CENTRE

120 Bolton Road, Atherton,
Manchester, M46 9JZ

03704 247 247 

enquiries@lgh.co.uk 

ABERDEEN WAREHOUSE

Unit 6-8, Kirkton Avenue,
Pitmedden Road Industrial Estate,
Dyce, Aberdeen, AB21 0BF

GLASGOW WAREHOUSE

Coronation Road Industrial Estate,
Motherwell, ML1 4HP

ALFRETON WAREHOUSE

Trading Estate, Wimsey Way,
Alfreton, DE55 4LS

LONDON WAREHOUSE

Unit 6, Crayside Industrial Estate,
Crayford, Kent, DA1 4RF



Call or email us today to
speak to one of our Rental
Desk experts or get in
touch direct with your
Technical Sales Manager.

Visit www.lgh.co.uk for full list
of European locations.