



MODULIFT SPREADER SERIES HANDY GUIDE

Modulift[®]
working between the hook and the load

Modulift are the leading supplier of **Spreader Beams, Lifting Beams, Spreader Frames** and other **below-the-hook heavy lifting equipment**.





What Size Spreader Beam Do I Need?

LGH Handy Guide will help

First... select the span you require, then select the WLL you need for that span.

Please see tables below to select your beam

Applied Technical Standards

- AS 4991: Lifting Devices
- BS EN 13155: Cranes – Safety – Non-fixed Load Lifting Attachments
- BS EN 1993-1-1: Eurocode 3: Design of Steel Structures – Part 1-1: General Rules and Rules for Buildings
- BS2573: Rules for the Design of Cranes: Part 1: Spec. for classification, stress calcs & design criteria for structures
- ASME B30.20 for Below-the-Hook Lifting Devices
- ASME BTH-1: Design of Below-the-Hook Lifting Devices
- DNV Design Approval: Modulift Spreader Beam Standard Range

Proof Load Factors

We adhere to the recommendations in the DNV Standard and DNV - GL ST-0378 – as per the formula below. The only times where we deviate from this is if a customer specifically asks for something different.

WLL ≤ 10T: 2 x WLL

10T < WLL ≤ 160T: (WLL x 1.04) + 9.6T

WLL > 160T: 1.1 x WLL

Grade 8.8 Bolts


Standard fasteners for connecting the components in Modulift spreader beams are grade 8.8 bolts, grade 8 nuts and form B washers. The function of the fasteners is to securely fasten the components together to form a single beam. In use, due to the 'pin-ended strut' design, the spreader beam itself is under a purely compressive load when the load is applied, and therefore the fasteners are themselves not subjected to tensile or other loads.



Modulift Spreader Beam Guide

Modulift Spreader Series	Bottom Shackle Size			Top Shackle Size		
	WLL	Max Pin Diameter	Recommended Jaw Width	WLL	Max Pin Diameter	Recommended Jaw Width
Mod 6	3.25t	19mm	27mm	4.75t	22mm	31mm
Mod 12	6.5t	25mm	36mm	8.5t	28mm	43mm
Mod 24	12t	35mm	51mm	17t	42mm	60mm
Mod 34	17t	42mm	60mm	25t	50mm	74mm
Mod 50	25t	50mm	74mm	35t	57mm	83mm
Mod 70	35t	57mm	83mm	55t	70mm	105mm
Mod 70H	55t	70mm	105mm	85t	83mm	127mm
Mod 110	55t	70mm	105mm	85t	83mm	127mm
Mod 110H	85t	83mm	127mm	120t	95mm	147mm
Mod 110SH	120t	95mm	147mm	150t	95mm	147mm
Mod 250/250	125t	80mm	137mm	200t	105mm	158mm
Mod 250/300	150t	95mm	147mm	200t	105mm	158mm
Mod 250/400	200t	105mm	158mm	300t	134mm	195mm
Mod 400/400	200t	105mm	158mm	300t	134mm	195mm
Mod 400/500	250t	120mm	179mm	300t	134mm	195mm
Mod 400/600	300t	134mm	195mm	400t	160mm	231mm
Mod 600/400	200t	105mm	158mm	300t	134mm	195mm
Mod 600/600	300t	134mm	195mm	400t	160mm	231mm
Mod 600/800	400t	160mm	231mm	500t	180mm	263mm
Mod 600/1000	500t	180mm	263mm	600t	200mm	289mm

For more help and information on hiring contact us

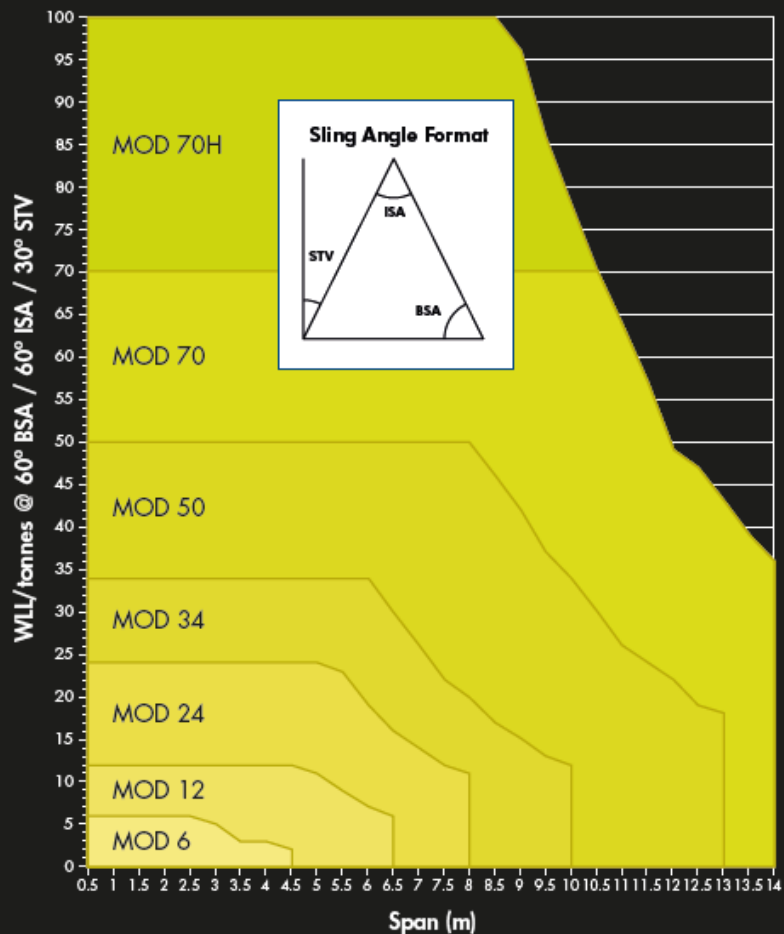
 **03704 247 247**

 **enquiries@lgh.co.uk**

 **www.lgh.co.uk**

The Standard Range

Load v Span Chart - Modulift Spreader Beam Standard Range



What size shackle do I need?

MOD 6
Top: 4.75t
Lower: 3.25t



MOD 12
Top: 8.5t
Lower: 6.5t



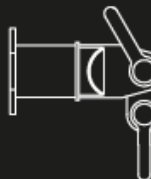
MOD 24
Top: 17t
Lower: 12t



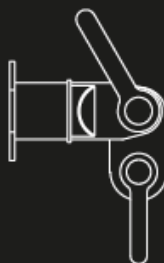
MOD 34
Top: 25t
Lower: 17t



MOD 50
Top: 35t
Lower: 25t



MOD 70/H
Top: 55t/85t
Lower: 35t/55t



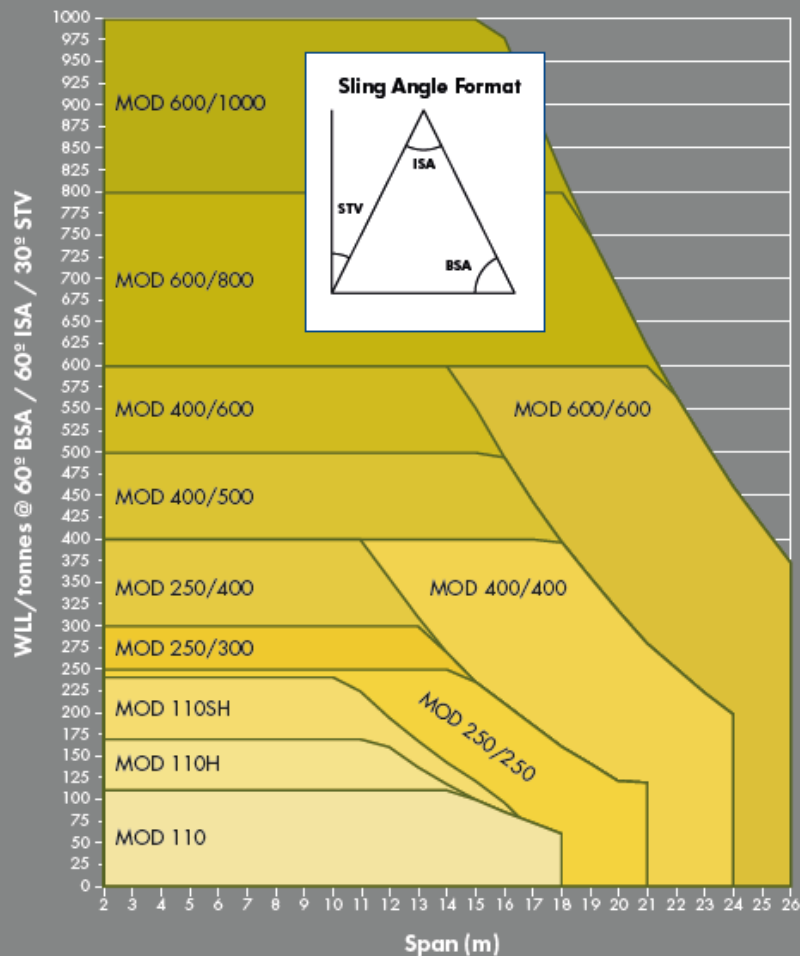
Spreader System	Strut													End unit	Drop link
	0.1m	0.2m	0.25m	0.3m	0.5m	0.6m	0.75m	1.0m	1.5m	2.0m	3.0m	4.0m	6.0m		
MOD 6	1	1		1		1		4						2	2
MOD 12			1		1		1	1	3					2	2
MOD 24					1			1		3				2	2
MOD 34					1			1		4				2	2
MOD 50					1			2		1		2		2	2
MOD 70/70H					1			1		2		2		2	2
MOD 110/110H					1			1		2		3		2	2
MOD 110SH					1			1		1		3		2	2
MOD 250-250 / 250-300 / 250-400					1			1		2	1		2	2	2
MOD 400-400 / 400-500 / 400-600					1			1		1	1		3	2	2
MOD 600-600 / 600-800 / 600-1000					1			1		1	1		3	2	2

Components per Set

* Please note: Custom length Struts are available on request

The Heavy Range

Load v Span Chart - Modulift Spreader Beam Heavy Range

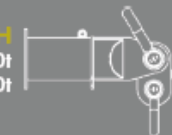


Weight per Set (kgs)

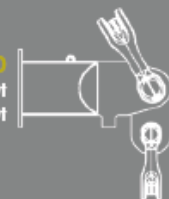
* Weight based on heaviest spreader in series using configuration recommended in user instructions

What size shackle do I need?

MOD 110/H/SH
Top: 85t/120t/150t
Lower: 55t/85t/120t



MOD 250
Top: 200t-300t
Lower: 125t-200t



MOD 400
Top: 300t-400t
Lower: 200t-400t



MOD 600+
Top: 300t-600t
Lower: 200t-500t



Weights	MOD 6	MOD 12	MOD 24	MOD 34	MOD 50	MOD 70, 70H	MOD 110, 110H	MOD 110SH	MOD 250	MOD 400	MOD 600
Max. Component Weight	8.1	19	41	51	140	240	367	444	860	1365	2665
Min. Component Weight	0.6	1.3	5	7	11	17 / 32	44 / 55	63	90	135	135
Weight at Max. Span	32	75	178	290	532	972/1090	1970/2130	2628	4895	8260	17260

Maintenance & Inspection Procedure

Each time a Modulift spreader beam is used regular checks need to be carried out and are specified on our user instruction sheets. In addition to these we also strongly recommend that all spreader beam components are thoroughly examined at intervals not exceeding six months by a competent person with relevant experience, knowledge and training. A written record of such examinations should be kept.

If a component or components are subject to exceptional circumstances, (i.e overloading) then a thorough examination should be carried out regardless of the period from last examination to ensure that the component(s) are still safe for use.